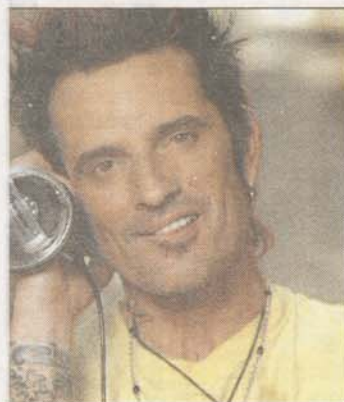


MOTLEY CRUE DRUMMER'S NEW CRIB Tommy Lee rocking into Calabasas

Special to Real Estate

Tommy Lee, drummer for glam rock band Motley Crue, has recently purchased Rodeo Realty Jim Pascucci's Calabasas' mansion.

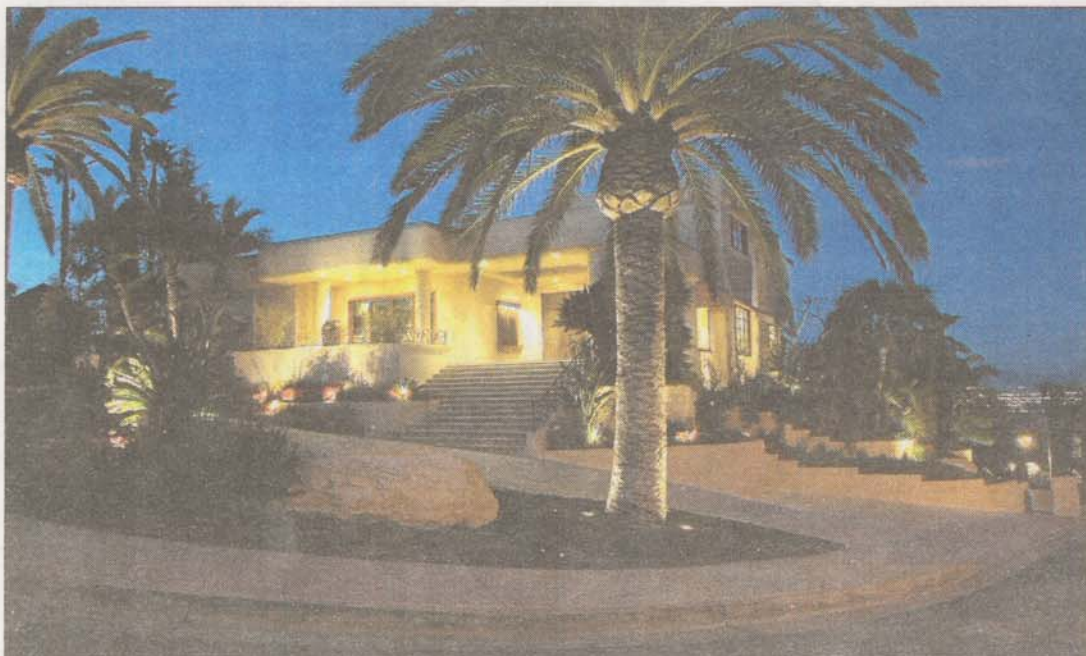
Pascucci, the Chairman of Estates for the firm, and a long time real estate maven on luxury



Tommy Lee

estates in the greater Los Angeles area, sold his own private residence to Tommy Lee.

An architectural masterpiece spanning approximately 9,000



square feet, with a subterranean 10-car garage, it was originally built by Calabasas Developer Larry Dinovitz and renovated by Pascucci himself in 2004 and 2005.

Right out of "Architectural Digest," this remarkable home is one of Los Angeles' landmark

estates. The property sold just below \$6 million.

Pascucci's Calabasas mansion was a "one of a kind" architectural wonder with an indoor three story atrium with a retractable roof, indoor koi pond with multiple waterfalls, three spas, a

piano shaped pool and a panoramic view of the city lights in the San Fernando Valley.

Situated on a private knoll in a private guard-gated community high above the Calabasas Country Club, the "water and sand" themed estate also features a

home theatre, two kitchens, one being a "wine-tasting kitchen," six bedrooms and 7.5 baths, gym, two steam showers and an extensive amount of hand distressed walnut floors, beamed ceilings, slate, granite, stacked stone and travertine slabs.

Tommy Lee is best known as



Jim Pascucci

the drummer for rock band Motley Crue and also happens to be ex-husband of actresses Pamela Anderson and Heather Locklear.